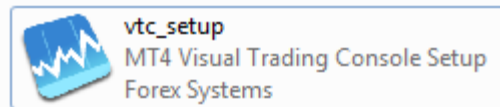


MT4 Visual Trading Console

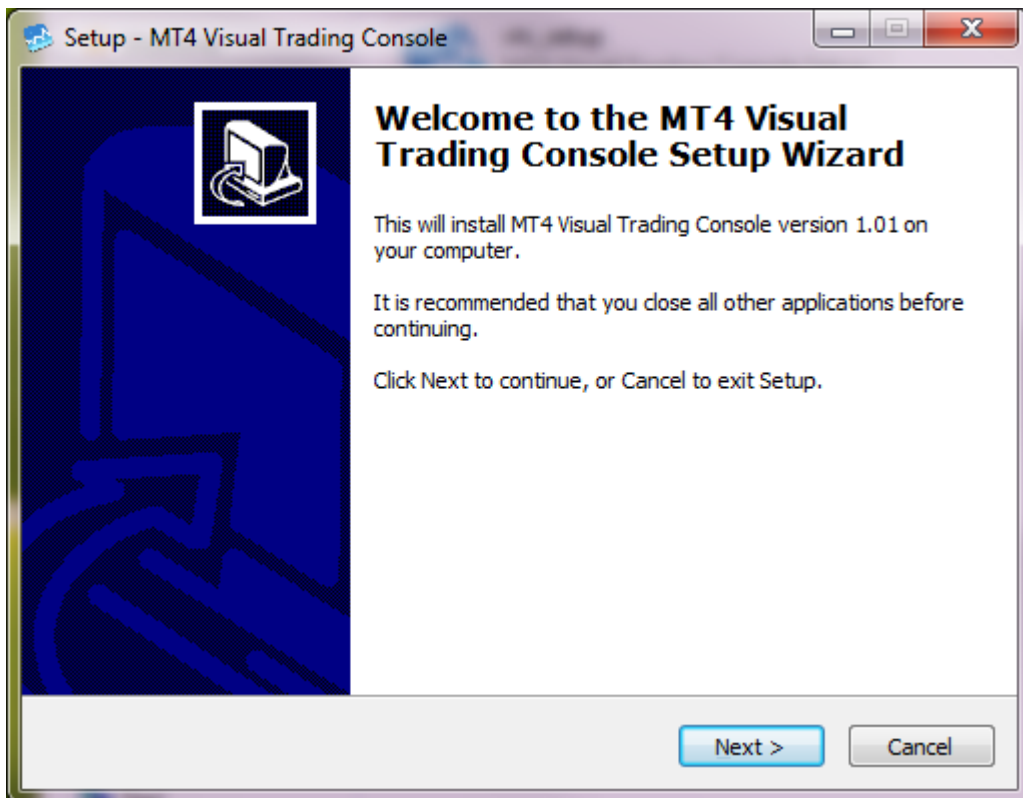
Quick Installation Guide

rev. d

Once you download the installation file make sure that you've closed all your MT4 terminals and double-click the installation file icon :

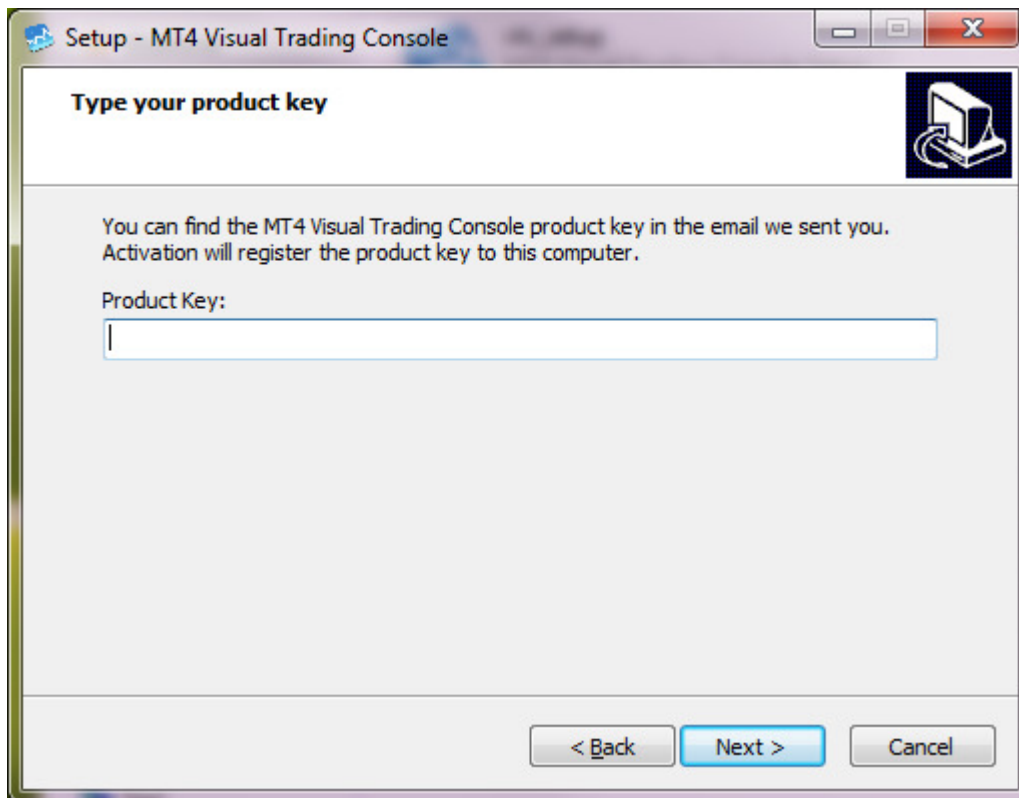


This will initiate the the installation process

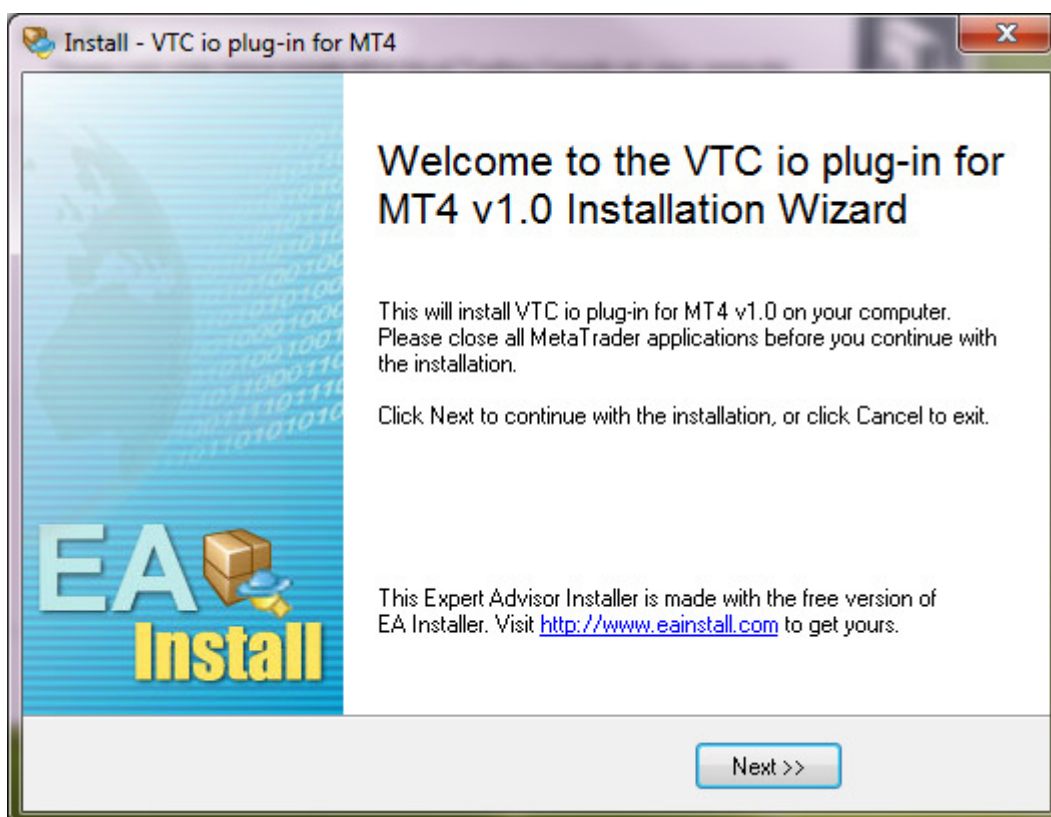


When you click Next you will be prompted to enter your product key.

(Your product key will be e-mailed to you within a few minutes after your purchase)



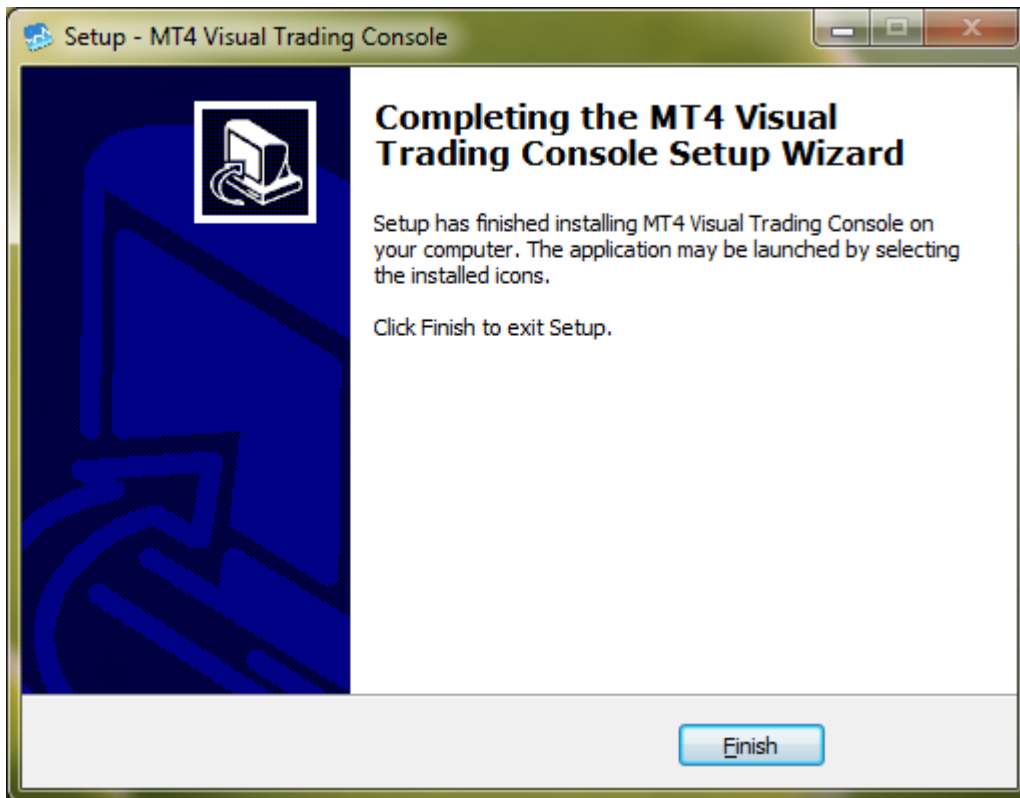
Click “Next” once you enter your product key and follow all the installer steps until you reach the following screen:



This step will install the Visual Trading Console's I/O driver and EA file which will be used by the VTC program to communicate with your MT4 terminal.

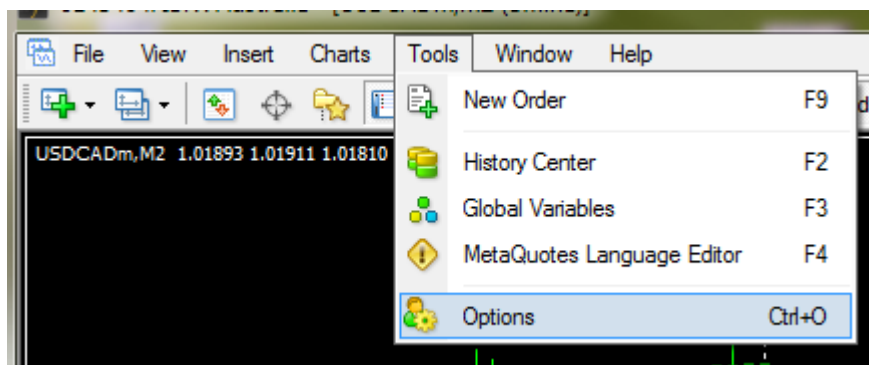
You need to follow all the steps of VTC I/O plug-in installer.

When you're done you will see the following screen:

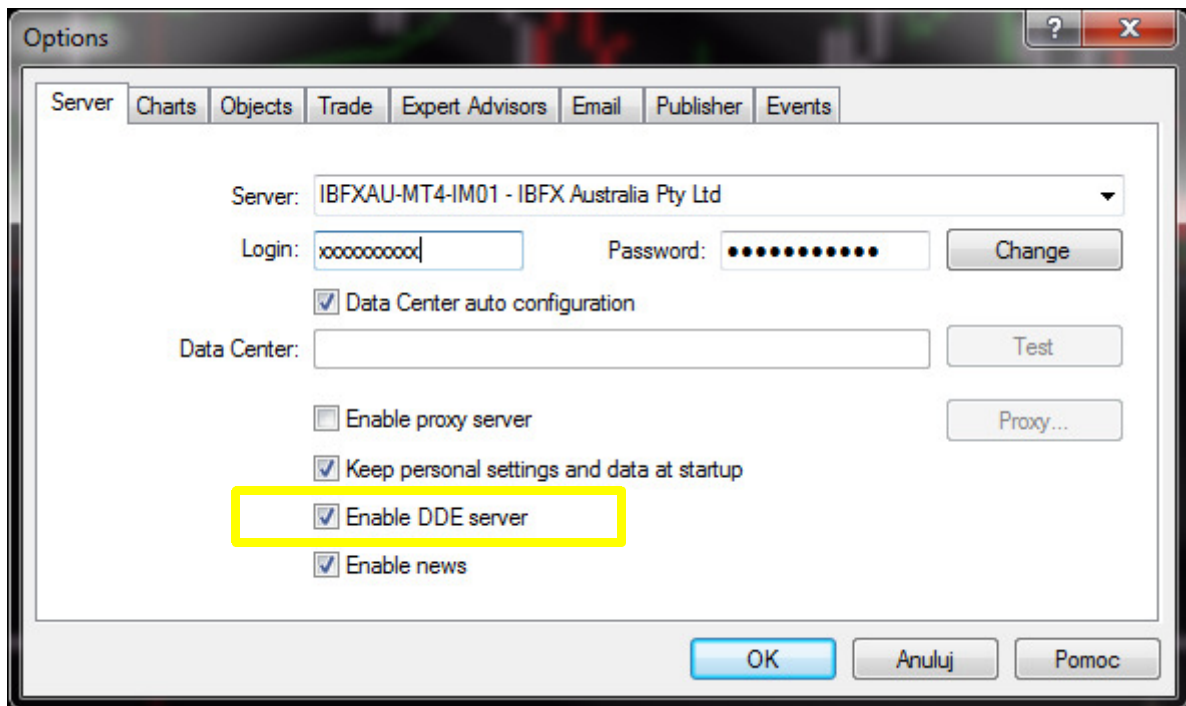


Now you can start your MT4 terminal program (the one you're going to use with VTC) and you will need to perform the following steps in order to correctly configure your MT4 terminal for VTC inter-operation.

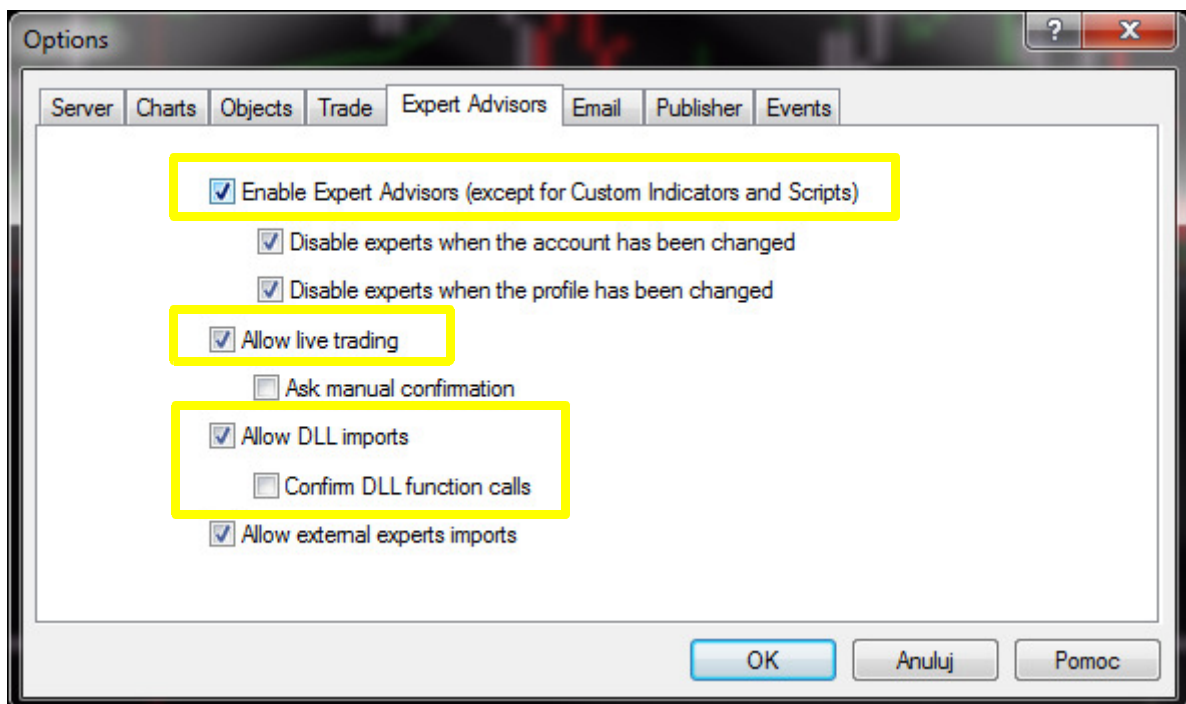
1. Go to your Tools / Options menu



2. Enable the DDE server in the Server Tab

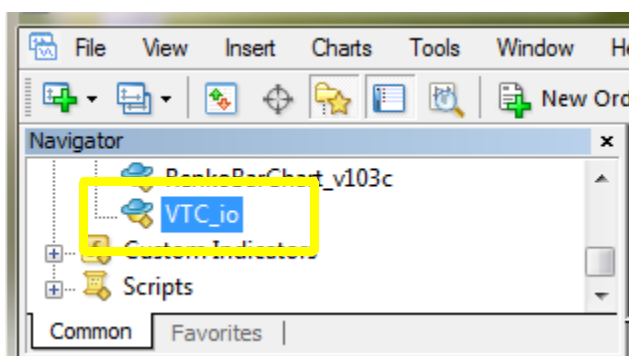


3. Allow DLL imports, unchecked Confirm DLL function calls and enabled Expert Advisors plus allow live trading for expert advisors.



Now you can click OK and you can attach the VTC_io EA to a chart of your choice.

The VTC_io EA is located in your Navigator window under Expert Advisors.

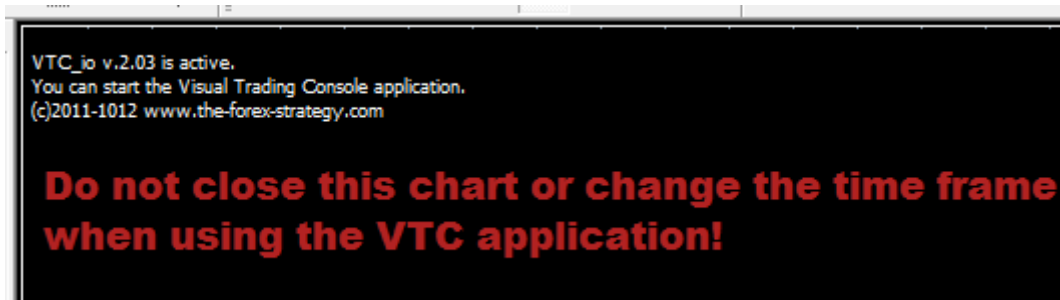


This can be any chart, but you MUST have it open at all times in order to maintain full communication with the VTC application.

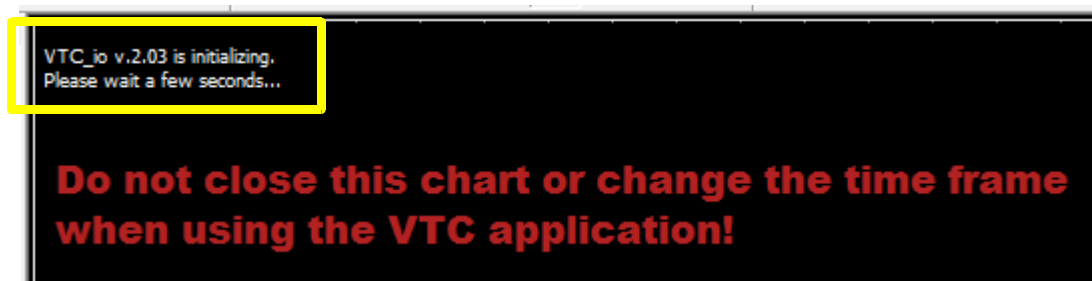
Please choose a chart that will be open at all times plus make sure you do not switch the periodicity of that chart once VTC_io is running. It is recommended that you choose a chart which you will not use for trading.

DO NOT ATTACH THE VTC_io EA TO MORE THAN ONE CHART!

Once you attach this EA to a chart you will see the following information on the top left hand corner of your chart once the first tick is received by the MT4 terminal:

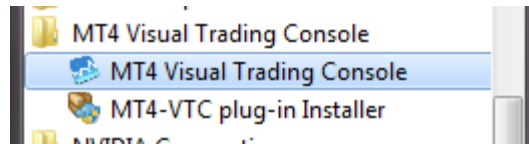


Make sure that you've turned ON Expert Advisor if you see the following information for too long:

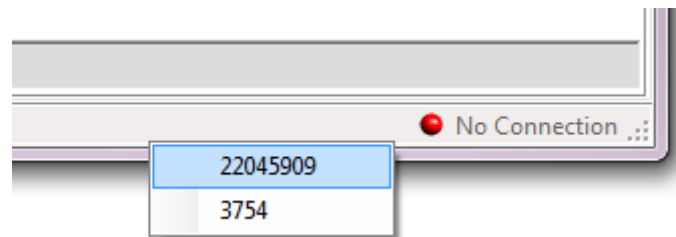


***IMPORTANT:** VTC uses MT4's DDE server for quotes so if you have more than one MT4 copy running on your PC, please make sure you disable the DDE server on all the other MT4 terminal instances otherwise the quotes may be incorrect.*

Now you can start you VTC application:



When you first start the VTC application you will see a “No MT4 connection” message on the application's status bar. Therefor you need to select the MT4 terminal, which the application should connect to. This is done by right clicking the status bar and selecting the currently connected account number from the list (via left-click on the selected account number) :



Once you select the account number the application will connect to to the corresponding MT4 terminal and the status bar message will show an Rx/Tx counter plus a “Connected to MT4 account: XXXXX | App ver.: X.XX.XX” message



You can now use the VTC application with your MT4 terminal.

The application will automatically attempt to connect to the previously used account number the next time it will be started.

If you are having any problems setting up the application please contact me at forex@home.pl and I'll help you with the setup over TeamViewer free of charge.

<http://www.teamviewer.com>